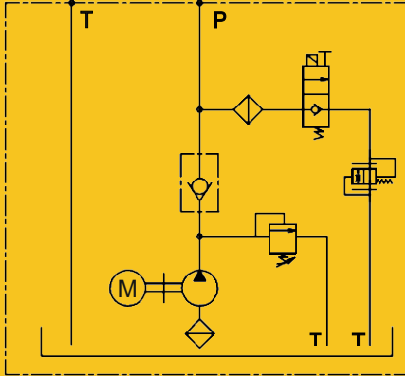


TORK[®] Hydraulics

Power Pack Series

TH1 Compact hydraulic power packs

Circuit diagram



How to order

| TH1 | - A2 / 2.2 | | - G2.5 | - CV15 | | |
|-----------------------------------|------------------------|--|--|-----------|-------------|--------------------|
| Product type | Electric motor | | Gear pump | Oil tank | | |
| Application | Voltage | Power | Displacement | Shape | Mounting | Capacity |
| Power packs for lift & Industrial | A2: AC220 A3: AC380 | 1.5: 1.5KW 2.2: 2.2KW 3.0: 3.0KW | G3.3: 3.3cc/r G4.2: 4.2cc/r G5.8: 5.8cc/r G8.0: 8.0cc/r | C: Cuboid | V: Vertical | 15: 15L 20: 20L |

| - P21 | G24 | M | - 4G |
|-----------------|----------------|---|--------------------|
| Relief valve | Solenoid valve | | Oil port |
| System pressure | Voltage | Manual override | Thread type & size |
| P7: 7Mpa | G12: DC12 | No code: Standard M: Manual override | 4G: BSP 1/4" |
| P10: 10Mpa | G24: DC24 | | 6G: BSP 3/8" |
| P16: 16MPa | W110: AC110 | | 4S: SAE 4 |
| P21: 21MPa | W220: AC220 | | 6S: SAE 6 |

Remark

Please contact us for special requirements such as different motor power & speed, pump displacement, tank material & capacity or oil port type.

Technical data

| | | |
|--|--------------------|----------------|
| AC Motor | Speed (r/m) | 1500 |
| | Frequency | 50Hz |
| | Duty | S1 |
| | Ingress protection | IP54 |
| | Insulation class | F |
| Hydraulic fluid | | Mineral oil |
| Seal material | | NBR seals |
| Temperature range (°C) | | -30 to +80 |
| Viscosity range (mm ² /s) | | 2.8 to 500 |
| Oil cleanliness class according to ISO4406 | | Class 20/18/15 |

Notes

1. Clean all hydraulic parts before mounting the power pack.
2. First oil changing is after initial 100 hours running time. After that, do oil changing every 3000 hours.

TH1 Compact hydraulic power packs

Capacity 15L

